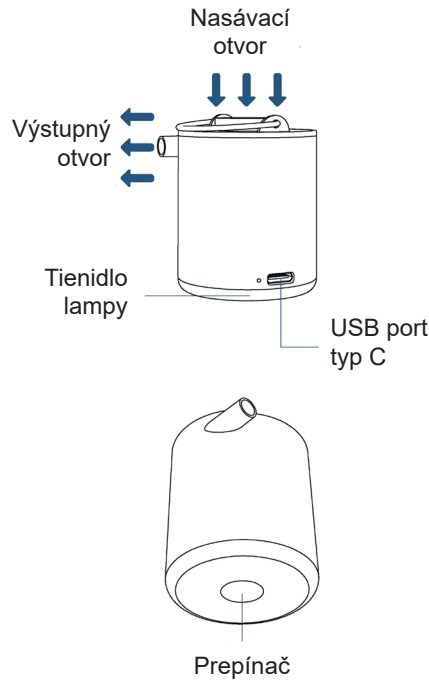


# Návod TINY Pump X 2023

## Predstavenie produktu



## Koncovky



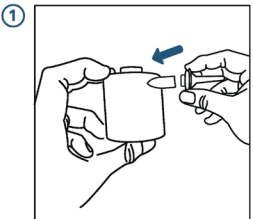
## Návod na použitie

### Režim vzduchovej pumpy

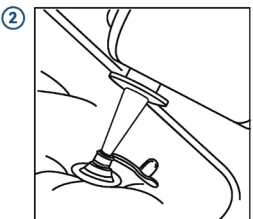


Zapnite dvojitým klikom

### Nafukovanie

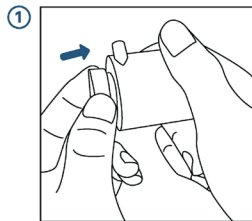


Pripojte koncovku na výstupný otvor

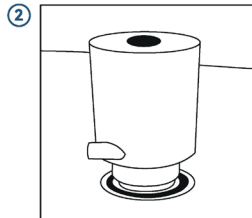


Pripojte na nafukovaný predmet

### Vyfukovanie skladovacích vriec

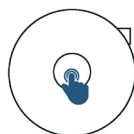


Vyberte koncovku pre vákuové vrecia a nasadte ju na pumpu

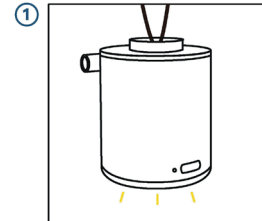
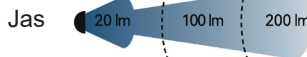


Pripojte koncovku k vákuovému vaku

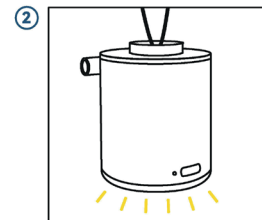
### Režim lampy



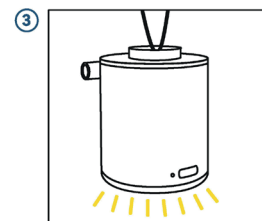
Stlačte na 3 sekundy



Prvý režim: 20 lm



Raz stlačte spínač: 100 lm



Raz stlačte spínač: 200 lm

